

# Enhancing diabetic retinopathy classification using deep learning

DIGITAL HEALTH  
Volume 9: 1–18  
© The Author(s) 2023  
Article reuse guidelines:  
sagepub.com/journals-permissions  
DOI: 10.1177/20552076231203676  
journals.sagepub.com/home/dhj



Ghadah Alwakid<sup>1</sup>, Walaa Gouda<sup>2</sup>, Mamoona Humayun<sup>3</sup>  and NZ Jhanji<sup>4</sup> 

## Abstract

Prolonged hyperglycemia can cause diabetic retinopathy (DR), which is a major contributor to blindness. Numerous incidences of DR may be avoided if it were identified and addressed promptly. Throughout recent years, many deep learning (DL)-based algorithms have been proposed to facilitate psychometric testing. Utilizing DL model that encompassed four scenarios, DR and its stages were identified in this study using retinal scans from the “Asia Pacific Tele-Ophthalmology Society (APTOS) 2019 Blindness Detection” dataset. Adopting a DL model then led to the use of augmentation strategies that produced a comprehensive dataset with consistent hyper parameters across all test cases. As a further step in the classification process, we used a Convolutional Neural Network model. Different enhancement methods have been used to raise visual quality. The proposed approach detected the DR with a highest experimental result of 97.83%, a top-2 accuracy of 99.31%, and a top-3 accuracy of 99.88% across all the 5 severity stages of the APTOS 2019 evaluation employing CLAHE and ESRGAN techniques for image enhancement. In addition, we employed APTOS 2019 to develop a set of evaluation metrics (precision, recall, and F1-score) to use in analyzing the efficacy of the suggested model. The proposed approach was also proven to be more efficient at DR location than both state-of-the-art technology and conventional DL.

## Keywords

Diabetic retinopathy, Convolutional Neural Network, deep learning, APTOS

Submission date: 27 April 2023; Acceptance date: 8 September 2023

## Introduction

Diabetic retinopathy (DR) is a prevalent cause of blindness in diabetics. High blood glucose levels are the primary consequence of diabetes and can have negative effects on many body systems. Retinal damage, often referred as DR, might occur for those with diabetes.<sup>1,2</sup>

Internationally, there were approximately 126.6 million DR sufferers in 2010, and it is predicted that this number will rise to approximately 191 million by 2030.<sup>3,4</sup> Nevertheless, with prophylactic therapy and severe surveillance, roughly 56% of new DR cases can be reduced.<sup>4,5</sup> Microaneurysms, hard/soft exudates, and hemorrhages are examples of lesion-based symptoms that the ophthalmologist looks for in retinal pictures to determine the severity stages of DR.<sup>6,7</sup> There are several levels to a DR in a good direction<sup>5,8</sup>: There are four stages of atherosclerosis: (i) mild, in which microaneurysms can still be contained; (ii) moderate, wherein veins lose their ability to carry blood; (iii) severe, when blood channel blockages form

and alert the body to produce new blood cells; and (iv) proliferative, wherein new arteries start sprouting. Some fundus pictures illustrating the different DR severity levels are depicted in Figure 1. Owing to circumstances like patient volume, physician expertise, time spent assessing, clarity of lesions, and so on, subjective examination

<sup>1</sup>Department of Computer Science, College of Computer and Information Sciences, Jouf University, Sakakah, Al Jouf, Saudi Arabia

<sup>2</sup>Department of Electrical Engineering, Faculty of Engineering at Shoubra, Benha University, Cairo, Egypt

<sup>3</sup>Department of Information Systems, College of Computer and Information Sciences, Jouf University, Sakakah, Al Jouf, Saudi Arabia

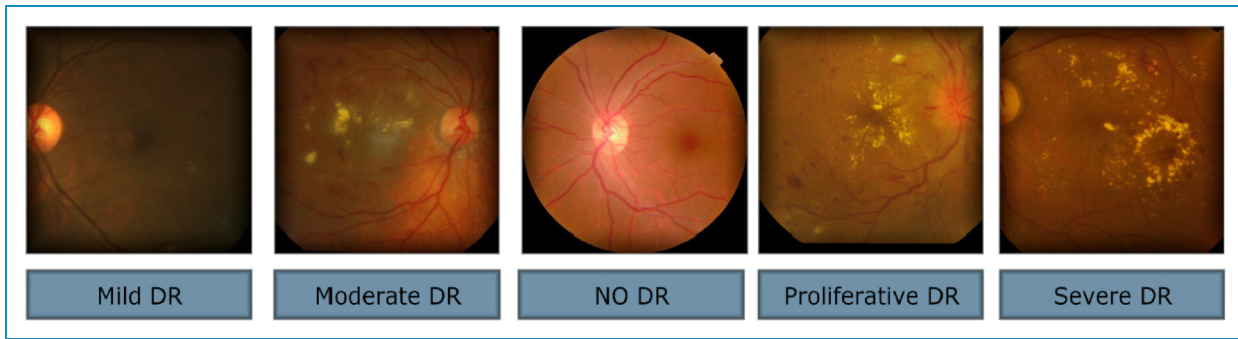
<sup>4</sup>School of Computer Science and Engineering (SCE), Taylor's University, Subang Jaya, Malaysia

### Corresponding author:

Mamoona Humayun, Department of information system College of Computer and Information Sciences, Jouf University, Sakakah 72341, Al Jouf, Saudi Arabia.

Email: mahumayun@ju.edu.sa





**Figure 1.** APTOS dataset fundus images for no DR, mild DR, moderate DR, severe DR, and proliferative DR severity levels. DR: diabetic retinopathy.

of fundus pictures for DR severity stage rating can introduce variations. In addition, ophthalmologists may disagree on the appropriate severity grade.<sup>9,10</sup> Our research shows that the following symptoms, among others, are key in determining the severity of a condition<sup>11</sup>:

- No DR: no retinal lesions
- Mild DR: several microaneurysms, hemorrhages in the retina, and hard exudates
- Moderate DR: cotton wool patches and retinal hemorrhages
- Severe DR: fulfilling one rule of the following:
  - ⊙ Severe bleeding in each of the four quadrants
  - ⊙ Venous beads in at least two quadrants
  - ⊙ Moderate intraretinal microvascular abnormalities in one or more quadrants
- Proliferative DR:
  - Fresh vessels at the disc greater than Early Treatment DR Study standard photograph 10A (about 1/3-disc area).
  - Any new vessels at the disc with vitreous hemorrhage.
  - Neovascularization elsewhere greater than 0.5-disc area with vitreous hemorrhage.

To diagnose DR, an ophthalmologist is needed, although even the most skilled doctors have trouble overcoming interobserver and intra-observer variability. Unfortunately, not everybody has recourse to fundus photography for retinal examinations, therefore many sufferers do not receive the care they require.<sup>12</sup> These days, ophthalmologists' assessment of digital fundus pictures is the gold standard for detecting DR in actual life. Thoroughly rating every image is conceivable however it would be extremely time-consuming and labor-intensive.<sup>13,14</sup> Most DR research has used machine learning (ML) for feature extraction up until recently, but difficulties with manual feature extraction have prompted a shift toward deep learning (DL). Using DL models for DR detection has been demonstrated to be a successful method.<sup>10,15</sup>

Our goal is to give ophthalmologists with a simple, accurate DL-based DR categorization to employ in their

diagnostic work. For this, existing researchers trained a model using image preprocessing methods and the Convolutional Neural Network (CNN) assessment model using the freely accessible Asia Pacific Tele-Ophthalmology Society (APTOS) dataset.<sup>16</sup> Nevertheless, with the increasing risk of DR, it is crucial to be vigilant in the face of this hazard and respond quickly when any symptoms of the illness are detected.

The original aspects of our research will be discussed here.

1. By fusing the filtering methods of contrast limited adaptive histogram equalization (CLAHE),<sup>17</sup> histogram equalization (HIST),<sup>18</sup> and an Enhanced Super-resolution Generative Adversarial Network (ESRGAN),<sup>19</sup> this study contributes to the literature by generating highly improved images for the APTOS dataset.
2. To evaluate how well the suggested strategy performs, we examine a number of measures simultaneously.
3. A proposed CNN network is trained using the APTOS dataset.
4. Using augmentation techniques, the overall size of the APTOS dataset was normalized so that all the data points possessed the same values.
5. By allowing for multiple iterations of the training stage, overfitting can be prevented, and the suggested method's underlying resilience can be enhanced.

This study presents four potential results: Scenario I, where no enhancement is adhered to the images; Scenario II, where HIST is adhered first, preceded by CLAHE and ESRGAN; Scenario III, where CLAHE is adhered first, preceded by HIST and ESRGAN; and Scenario IV, where CLAHE and ESRGAN are adhered simultaneously to continue improving the DR stage improvement. Furthermore, we assessed the outcomes of the models being trained on the APTOS dataset with CNN to the training examples. Owing to the imbalanced data in the dataset, oversampling using augmentation techniques is required. Each subsequent component of the article will be built upon this outline. Information on the DR's history is provided in the second section, and the research methodology is

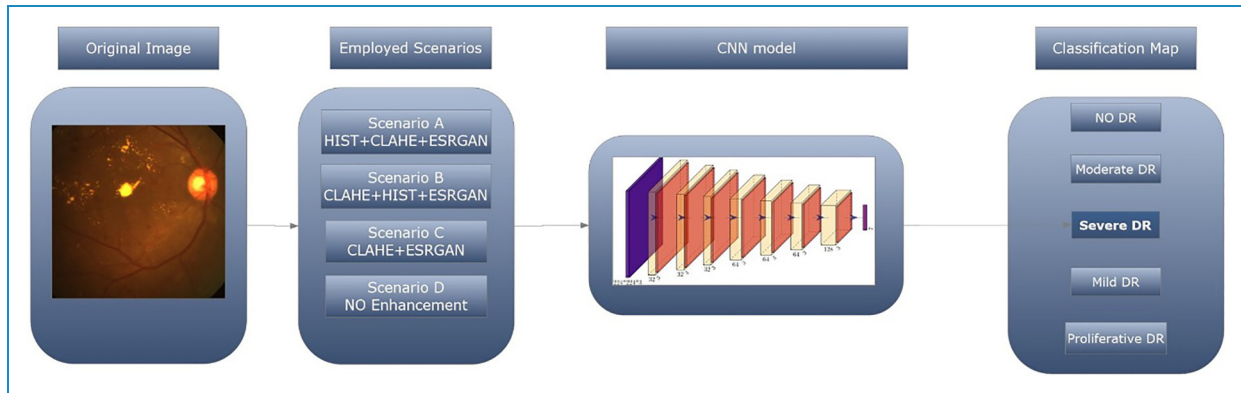


Figure 2. Architecture of the proposed method.

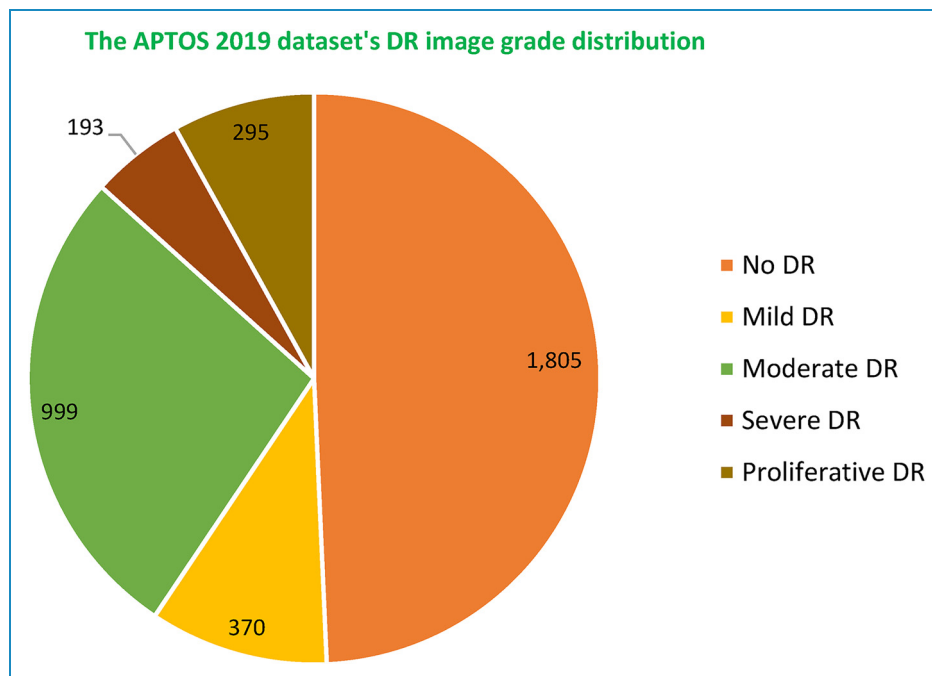


Figure 3. Dr Grading distribution for the APTOS 2019 dataset.

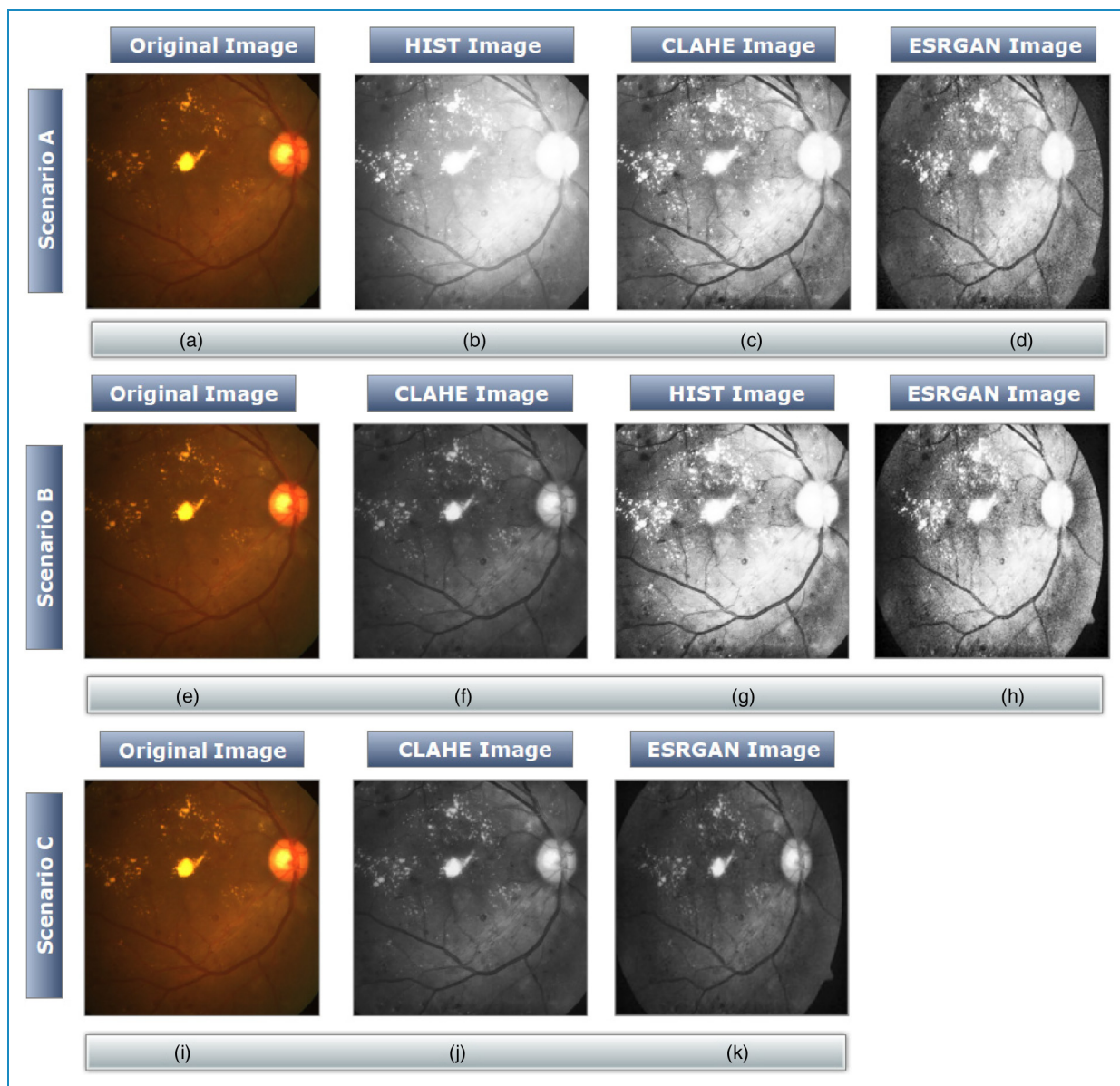
outlined in the third section. In the fourth section, we provide the results and go over them. Final thoughts and recommendations for further study are provided in the fifth section.

### Related work

Challenges arose when DR image detection had to be done manually. Inadequate ophthalmologists and high costs are barriers for many patients in low-income countries. Computerized information systems have been established to enable quick access to trustworthy assessments and therapeutic choices because of the critical importance of early identification in the fight against vision loss. Consequently, ML systems trained on pictures of the fundus of the eye have been capable of diagnosing DR effectively.<sup>20,21</sup> Despite the fact that ML algorithms achieved a decent outcome, extra work

is necessary to obtain attributes utilizing techniques for image processing. Lately, DL models have demonstrated great performance in computer vision. Furthermore, numerous efforts utilizing DL models to discriminate DR from fundus images have been reported. Throughout addressing the fairly short size of DR datasets, transfer learning (TL) was employed in some of this research.

For example, Qummar et al.<sup>22</sup> investigated an ensemble stacking technique to improve output feature maps. The model was also assessed using the Kaggle EyePACS dataset. Sugeno et al.<sup>23</sup> applied the EfficientNet-B3 network to the APTOS dataset for binary and severity classification. Using the DIARETDB11 dataset, they also developed and evaluated a method for lesion identification. Furthermore, Boix et al.<sup>24</sup> intentionally included Meta-Plasticity,



**Figure 4.** Variations of image enhancement techniques.

a bio-inspired phenomenon, into the back-propagation path of CNN to encourage fewer common occurrences throughout the learning process. In addition to using APTOS data for binary and severity rating tasks, a number of DL architectures were utilized to accomplish the method. Using five well-known models (Resnet50, InceptionV3, Xception, DenseNet121, and DenseNet169), For the DR binary classification task, researchers trained a Gaussian Process regressor using the EyePACS and Messidor-2 datasets and then extracted features using the hybrid DL model described by Cortes et al.<sup>25</sup>

In addition, Lesion-Net was developed by Wang et al.<sup>26</sup> with the primary objective of incorporating lesion identification into severity grading, the encoder's predictive

capability can be improved. The design was constructed using InceptionV3 and trained and validated using a proprietary dataset. In addition, Liu et al.<sup>27</sup> employed several TL models including EfficientNetB4, EfficientNetB5, NASNetLarge, Xception, and InceptionResNet-V2 to predict DR from the EyePACS dataset. Using a new cross-entropy loss function and three hybrid model structures, the DR was successfully categorized with an accuracy of 86.34%. Another study by Sheikh et al.<sup>28</sup> identified DR from fundus images using four TL algorithms: VGG16, ResNet50, InceptionV3, and DenseNet-121. DenseNet-121 outperformed competing models with a sensitivity of 90% and a specificity of 87%. While, Zhang et al.<sup>29</sup> developed a Source-Free TL model for attributable DR using unlabeled retinal images. Using the



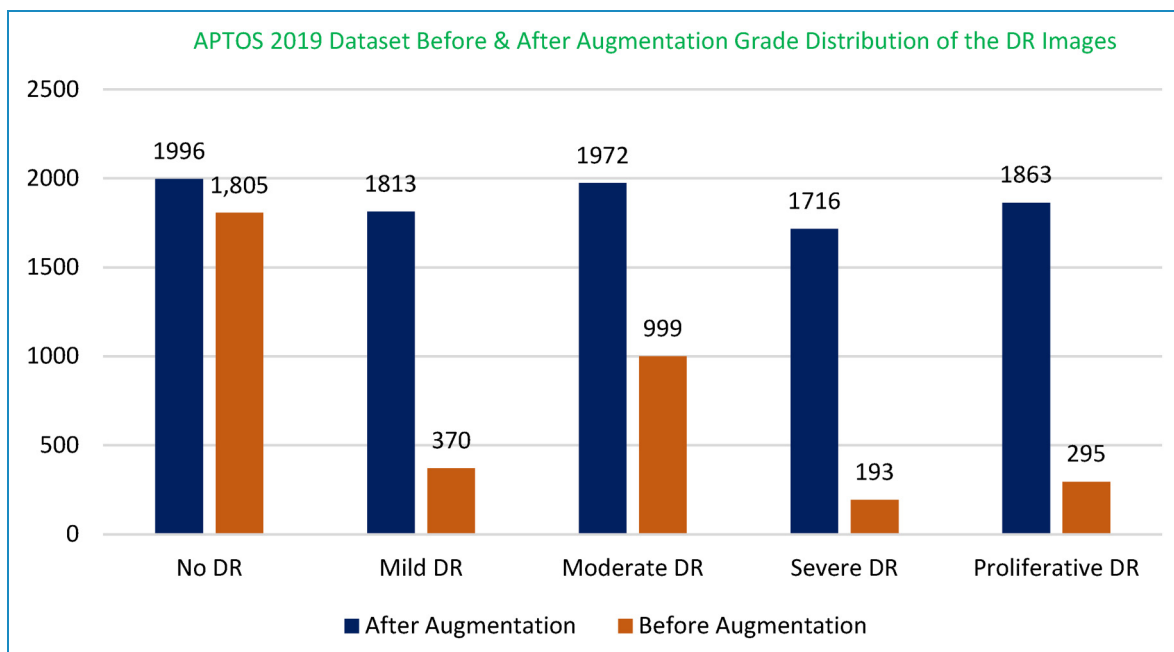


Figure 5. Training image frequency before and after augmentation methods.

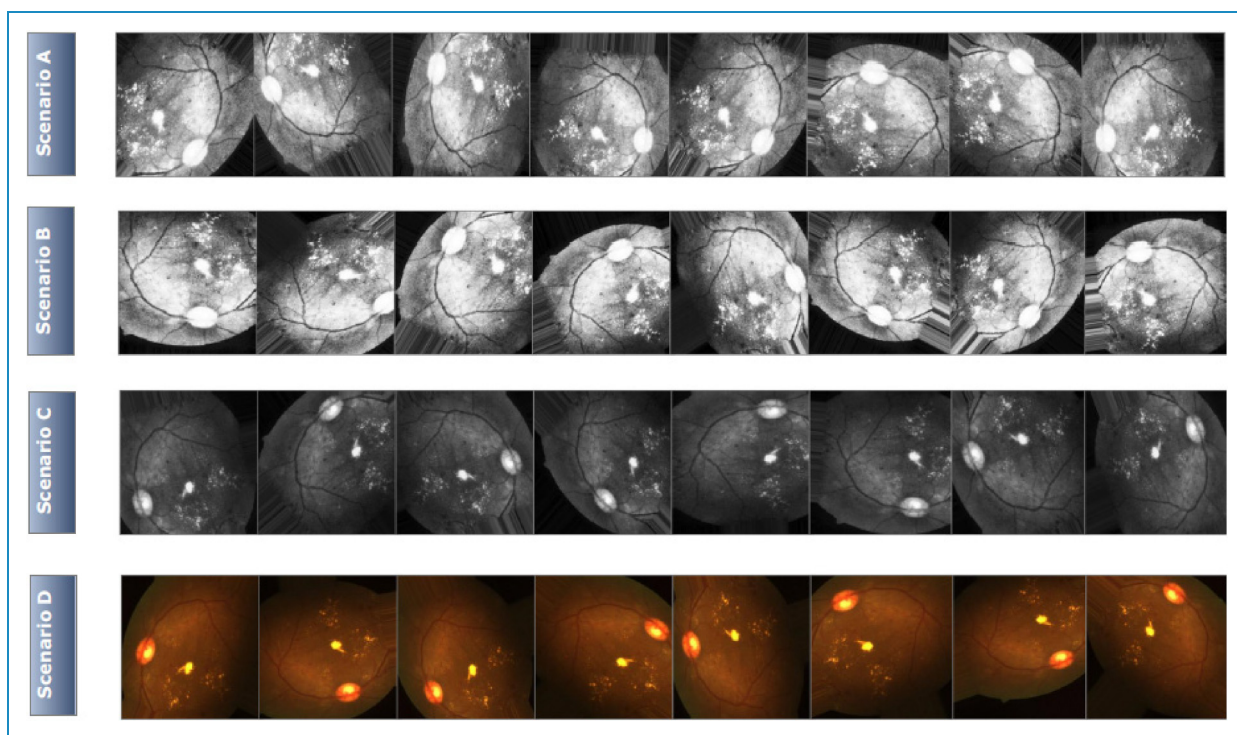
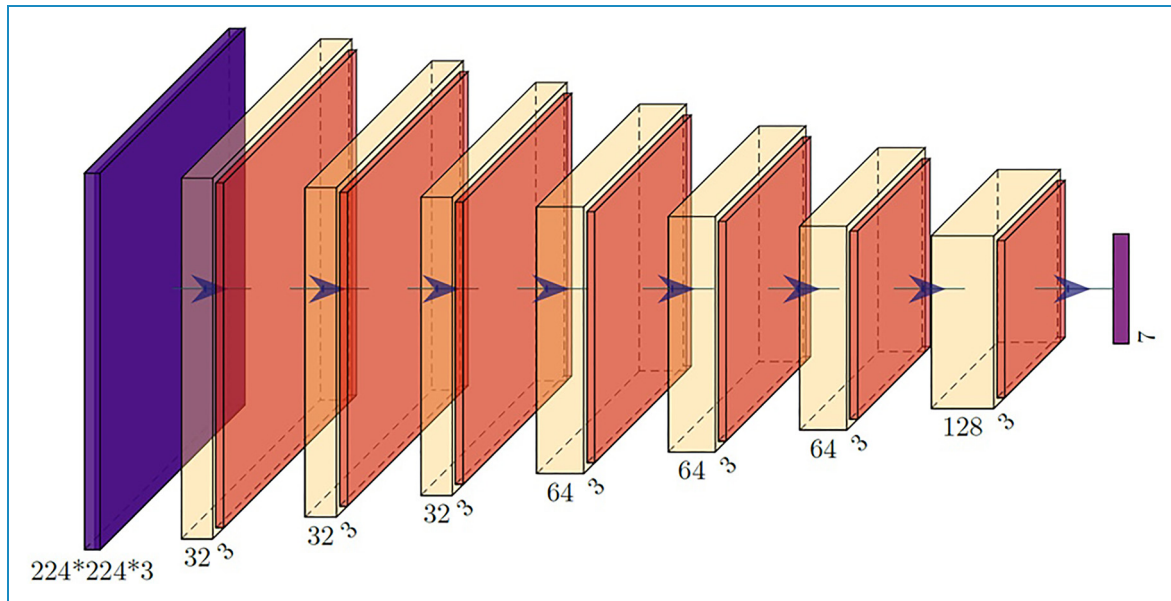


Figure 6. Images augmentation for four potential scenarios.

APTOS dataset, they evaluated their technique on binary and multiclass classification tasks.

Regarding fully automatic DR classification, Xu et al.<sup>30</sup> suggested using a DL model with a 94.5% accuracy. Due to the issue of overfitting, they employed several

augmentations to compensate for the small sample size. Khalifa et al.<sup>31</sup> investigated deep TL-based methods for detecting medical DR. We conducted some mathematical research using APTOS 2019. Several DL networks are utilized in their work. DenseNet and Inception-Resnet were



**Figure 7.** Proposed CNN architecture.<sup>38</sup> CNN: Convolutional Neural Network.

avored with additional layers. Afrin and Shill<sup>32</sup> employed image processing to eliminate blood vessels, exudates, and microaneurysms. Utilized a knowledge-based fuzzy classifier to accurately classify the processed pictures' measured blood vessel area, exudate area, and microaneurysm count.

Furthermore, Lin and Jiang<sup>3</sup> conducted that preprocessing can boost training model data employing a revised EfficientNet model to increase DR classification performance. Ali and Raut<sup>4</sup> preprocess and binary categorize APTOS dataset fundus pictures using ResNet50 and ML models. For automatically assessing diabetic retinopathy severity, Yogapriya<sup>6</sup> recommend TL. TL and the latest Deep CNNs (Alexnet, Resnet 18, and VGG16) evaluated the DR images. Using APTOS 2019 Blindness Detection dataset, DR diagnostic model performance is compared.

Research into DR detection and diagnostic methods has revealed the need for more data in a wide variety of settings. Whereas some research have gotten high dependence values employing pretrained models via TL, due to the lack of available data, there hasn't been much focus on building and training a unique DL model from scratch. Additionally, almost all of these experiments only trained DL models on raw photos, which restricted the extensibility of the final detection network. The current research overcomes the true know by providing a compact DR detection approach by merging many phases into the construction of CNN model. The improved efficiency and effectiveness of the proposed solution is exactly what the market demands.

## Research methodology

Figure 2 shows how the CNN has been thoroughly trained on the images from the APTOS 2019 dataset in order to produce

racially biased and practical representations for the DR classification method. Throughout this section, researchers outline succinctly the methodology used to analyze the presented data. The four scenarios of this approach, along with the preprocessing algorithms, basic design, and instructional strategies for the chosen methodology, are then explained in detail, and the deployment of the presented approach is addressed.

## Dataset description

The APTOS dataset<sup>16</sup> is a publicly accessible Kaggle datasets that is employed in this study. High-resolution fundus photos demonstrate all five severity stages of DR, ranging from stage 0 (no DR) to stage 4 (proliferate DR) as depicted in Figure 1. The collection contains 3662 photos with size  $3216 \times 2136$ -pixel from 193 patients with severe DR, 370 patients with mild DR, 999 patients with moderate DR, and 295 patients with progressive DR (Figure 3). The dataset collection contains 3662 photos with size  $3216 \times 2136$ -pixel from 193 patients with severe DR, 370 patients with mild DR, 999 patients with moderate DR, and 295 patients with progressive DR (Figure 3). There may be difficulties with the given images, including such blemishes, distortions, or low luminance. The collection's significant diversity is largely indicative of the fact that the images were gathered over such a substantial amount of time by many different people using so many different lenses in so many different places.

## Proposed methodology

Figure 2 demonstrates the training of an automatic DR prediction model utilizing this study's dataset. Four versions

**Table 1.** The proposed CNN architecture of the severity grading DR detection model.

Layer type	Filters	Kernel size	Stride	Output shape	Param #
Input	-	-	-	224,224,3	896
Convolution	32	3 × 3	1	222, 222, 32	0
Max pooling		3 × 3	1	220, 220, 32	0
Convolution	32	3 × 3	1	218, 218, 32	9248
Max pooling		3 × 3	1	216, 216, 32	0
Convolution	32	5 × 5	2	108, 108, 32	25632
Max pooling	-	3 × 3	1	106, 106, 32	0
Dropout	-	0.2	-	106, 106, 32	0
Convolution	64	3 × 3	1	104, 104, 64	18496
Max pooling	-	2 × 2	1	103, 103, 64	0
Convolution	64	3 × 3	1	101, 101, 64	36928
Max pooling	-	2 × 2	1	100, 100, 64	0
Convolution	64	5 × 5	2	50, 50, 64	102464
Max pooling	-	2 × 2	1	49, 49, 64	0
Dropout	0.6	-	-	49, 49, 64	0
Convolution	128	3 × 3	1	47, 47, 128	73856
Max pooling	-	2 × 2	1	46, 46, 128	0
Flatten	-	-	-	270848	0
Dropout	0.5	-	-	270848	0
Dense layer	-	5	-	-	1354245
Total params: 1,621,765 Trainable params: 1,621,76 Nontrainable params: 0					

Convolutional Neural Network; DR: diabetic retinopathy.

**Table 2.** The highest reliability after improvement (HIST + CLAHE + ESRGAN).

1. Accuracy	2. Top-2 accuracy	3. Top-3 accuracy	4. Recall	5. Precision	6. F1-score
7. 0.7486	8. 0.8852	9. 0.9599	10. 0.75	11. 0.74	12. 0.74

CLAHE: contrast limited adaptive histogram equalization; ESRGAN: Enhanced Super-resolution Generative Adversarial Network; HIST: histogram equalization.

are presented: two scenarios with three-stage preprocessing (using HIST, CLAHE, and ESRGAN, and the other with CLAHE, HIST, and ESRGAN), one scenario with two-stage preparation (using CLAHE and ESRGAN) and the last scenario with no enhancement. Beyond this stage, augmentation procedures are undertaken to avoid overfitting. CNN is ultimately employed to provide labels to the images.

**Data preparation with CLAHE, HIST, and ESRGAN.** There are numerous ways to acquire retinal pictures. Due of the dramatic brightness necessary changes by the proposed approach, it was necessary to improve DR picture clarity and eliminate multiple types of noise. All images are resized to  $224 \times 224 \times 3$  to ensure that the inputs to the learning model are as uniform as possible throughout all scenarios. Although the luminance for every individual pixel in an image may vary greatly, all images have been normalized to lie inside the range  $[-1]$  to  $[1]$  in order to eliminate noise and keep it within appropriate bounds. By standardizing the method, it becomes easy to adapt by adjusting minute weight modifications. Three of these techniques are displayed in Figure 4; these approaches increase precision by raising intensity to accentuate the image's borders and curvatures.

**Table 3.** Class-specific outcomes generated utilizing HIST + CLAHE + ESRGAN.

Classes	Recall	Precision	F1-score	Total number of images
No DR	0.97	0.94	0.95	270
Moderate DR	0.78	0.70	0.74	150
Mild DR	0.43	0.52	0.47	56
Severe DR	0.21	0.33	0.26	29
Proliferative DR	0.52	0.62	0.57	44
Mean	0.79	0.77	0.78	549

CLAHE: contrast limited adaptive histogram equalization; DR: diabetic retinopathy; ESRGAN: Enhanced Super-resolution Generative Adversarial Network; HIST: histogram equalization.

**Table 4.** The highest reliability after improvement (CLAHE + HIST + ESRGAN).

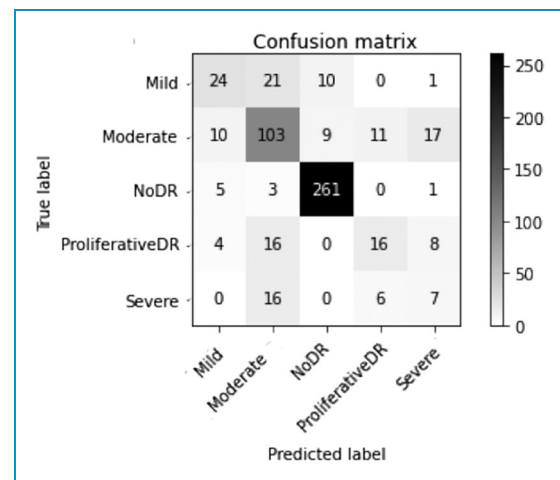
13. Accuracy	14. Top-2 accuracy	15. Top-3 accuracy	16. Recall	17. Precision	18. F1-score
19. 0.7067	20. 0.8288	21. 0.9381	22. 0.71	23. 0.72	24. 0.71

CLAHE: contrast limited adaptive histogram equalization; ESRGAN: Enhanced Super-resolution Generative Adversarial Network; HIST: histogram equalization.

**Scenario A.** Prior to the application of augmentation and training in scenario A, all images are preprocessed with typical approaches. In order to enhance the DR image's prominent features, themes, and blurriness, the brightness characteristics of the input image were reallocated using HIST.<sup>17,18</sup> This is shown in Figure 4(b). HIST can be thought of as a particular data type's dispersion. It is a technique for enhancing the clarity and sharpness of an image.

Whenever the histogram is well-balanced, pixel values between 0 and 255 are possible. High contrast and visible clarity are characteristics of histograms of exceptional quality. Additionally, as depicted in Figure 4(c), CLAHE was applied to ameliorate the DR image's inadequate luminance, prominent features, and patterning by distributing the input image's luminance characteristics.<sup>33</sup> In order to accomplish this, the image was broken into a large number of non-overlapping portions of around the same dimensions. Such approach increases the image's local brightness and clarifies its edges and curves. Figure 4(d) depicts the importation of stage 2 data into ESRGAN for further analysis. By utilizing ESRGAN, it is possible to more precisely mimic the sharp edges that characterize visual aberrations.<sup>34</sup>

**Scenario B.** Likewise, scenario a all photos in scenario b are preprocessed before the augmentation and training



**Figure 8.** Superior confusion matrix with improvement (HIST + CLAHE + ESRGAN) for APTOS dataset. CLAHE: contrast limited adaptive histogram equalization; ESRGAN: Enhanced Super-resolution Generative Adversarial Network; HIST: histogram equalization.



**Table 5.** Class-specific outcomes generated utilizing CLAHE + HIST + ESRGAN.

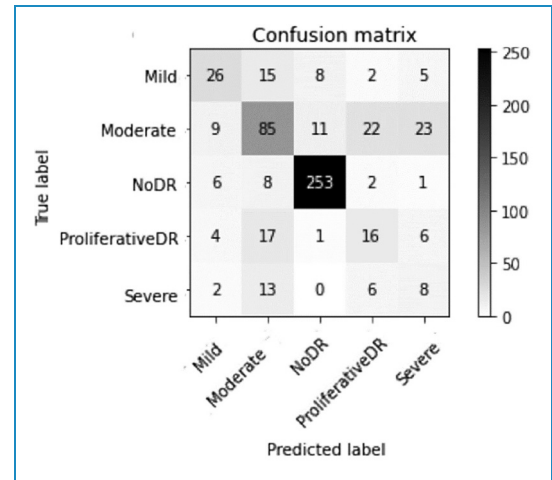
Classes	Recall	Precision	F1-score	Total number of images
No DR	0.94	0.93	0.93	270
Moderate DR	0.57	0.62	0.59	150
Mild DR	0.46	0.55	0.50	56
Severe DR	0.28	0.19	0.22	29
Proliferative DR	0.36	0.33	0.35	44
Mean	0.71	0.72	0.71	549

CLAHE: contrast limited adaptive histogram equalization; DR: diabetic retinopathy; ESRGAN: Enhanced Super-resolution Generative Adversarial Network; HIST: histogram equalization.

stages being undertaken. Figure 4(f) depicts how CLAHE was applied to disperse the luminance characteristics of the original image in order to improve the DR image's lack of sharpness, significant features, and motifs. Figure 4(g) displays the output following the application of histogram equalization to the output of stage 2. Figure 4(h) illustrates ESRGAN's execution of stage 3 results.

**Scenario C.** Throughout scenario c, images are pre-processed just as they were in scenarios a and b prior to the augmentation and training phases. Figure 4(j) illustrates the use of CLAHE to the original image. As shown in Figure 4(k), the second and final step involves applying ESRGAN to the intermediate outcome.

**Data augmentation.** Regarding addressing the issue of an incompatible dataset and improve the overall number of images used for CNN training, the authors augmented the training set with additional data. Generally, DL approaches function better when they have access to more data. In reality, authors could utilize the importance of DR imaging by tailoring the improvements given to each image. The reliability of the DL model is uncompromised by image changes such as scaling, flipping, or rotations. To avoid the data from becoming overfitted and to remedy any differences, data upgrades such as translating, twisting, and expanding are utilized. Among the adjustments utilized in this study is a horizontal shifting that has been increased. The horizontal elements of the image should be shifted whereas the camera's angle stays unaltered. The aspect angle of the input images is maintained, but a value among 0 and 1 specifies the magnitude of the alteration. The image can be flipped freely between 0 and 180 degrees as an additional option. Authors are capable of avoiding variable sample sizes and



**Figure 9.** Superior confusion matrix with improvement (CLAHE + HIST + ESRGAN) for APTOS dataset. CLAHE: contrast limited adaptive histogram equalization; ESRGAN: Enhanced Super-resolution Generative Adversarial Network; HIST: histogram equalization.

confusing classifications by augmenting the data. Figure 3 depicts the APTOS dataset as a clear example of a “totally imbalanced class.” A “totally unbalanced class” is one in which the distribution of the data is extremely erratic. Figure 5 illustrates the use of augmentation techniques to evenly redistribute the dataset's classes across all cases.

To provide the network with a broad variety of brand-new instances, any modifications that have been previously made to the pictures in the training set are utilized. Figure 6 depicts the four diverse scenarios utilized to train CNN regardless to the fact that the overall number of images to operate on remained constant. This becomes clear that the objective of data augmentation is to enhance the amount of data by giving replicas of existing data that have been extensively modified or by developing new data from existing data. Within each of these four scenarios, the process of creating new data is conducted according to the same principles.

**CNN model architecture.** CNNs are the most advanced artificial neural networks (ANNs) due to their deep structures. LeCun et al.<sup>35,36</sup> proposed CNN in 1989 as an enhanced form of ANN with a complex design concept. The main areas where CNNs are used are in image processing, medical imaging and signal processing, natural language processing (NLP), and data analytics.<sup>37</sup> Convolutional layers, pooling layers, and fully connected (FC) layers are the building blocks of a DL CNN. The FC layer is the final layer while the convolutional layer is the first. The FC layer is the next most complex layer in the CNN after the convolutional layer. By gradually identifying more and more intricate parts of an image, the CNN is able to ultimately recognize the object in its entirety. By gradually identifying more and more intricate parts of an image, the CNN is able to ultimately recognize

**Table 6.** The highest reliability after improvement (CLAHE + ESRGAN).

25. Accuracy	26. Top-2 accuracy	27. Top-3 accuracy	28. Recall	29. Precision	30. F1-score
31. <b>0.9783</b>	32. <b>0.9931</b>	33. <b>0.9980</b>	34. <b>0.98</b>	35. <b>0.98</b>	36. <b>0.98</b>

CLAHE: contrast limited adaptive histogram equalization; ESRGAN: Enhanced Super-resolution Generative Adversarial Network.

**Table 7.** Class-specific outcomes generated utilizing CLAHE + ESRGAN.

Classes	Recall	Precision	F1-score	Total number of images
No DR	1.00	1.00	1.00	270
Moderate DR	0.97	0.97	0.97	150
Mild DR	0.95	0.95	0.95	56
Severe DR	0.93	0.90	0.92	29
Proliferative DR	0.95	0.98	0.97	44
Mean	0.98	0.98	0.98	549

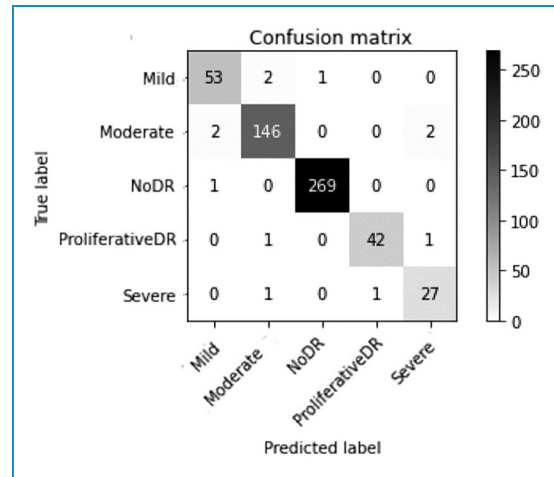
CLAHE: contrast limited adaptive histogram equalization; DR: diabetic retinopathy; ESRGAN: Enhanced Super-resolution Generative Adversarial Network.

the object in its entirety. To plot attributes, the augmented images are presented to CNN's convolutional layer and convoluted with trainable filters. Figure 7 depicts the classifier model of CNN architecture, which enhances prediction performance. CNN has convolution, activation, pooling, and fully interconnected layers, as shown in Figure 7. The proposed CNN model consists of four principal layers and an output layer. Each layer consists of three CL, with the first two having a kernel size of three and the third having a kernel size of five. Stride equals to one for the initial two CL and two for the last CL; ReLU activation function for all layers; and three max pooling layer (PL) with pool size of three and stride equal to one. The CL "filters" the pixel values of the incoming image into a single value. Training with back-propagation improves filtered pictures. The PL accelerates training through down sampling and matrix size reduction. The FC layer then outputs categorization outcomes (Table 1).

## Experimental results

### Configuration and practices for CNN

The suggested DL approach was validated using the APTOS dataset, and its usefulness was evaluated against established criteria. Eighty percent of the photos were used for training (9360), 10% for testing (549), and 10% were randomly

**Figure 10.** Superior confusion matrix with improvement (CLAHE + ESRGAN) for APTOS dataset. CLAHE: contrast limited adaptive histogram equalization; ESRGAN: Enhanced Super-resolution Generative Adversarial Network.

picked as a validation set (549) to test the effectiveness and maintain the ideal weight compositions. During the whole learning procedure, the quality of the image was reduced to  $224 \times 224 \times 3$ . We examined the TensorFlow Keras part of the proposed model on a Linux PC with an RTX3060 GPU and 8GB RAM. The suggested technique is pretrained on the APTOS dataset (validation patience) and uses both the Adam optimizer and a learning rate strategy that slows down learning when it stalls for a long time. A variety of training hyperparameters were adjusted by the authors. For example, for the simulation's 50 iterations, they used a learning rate between  $1E3$  and  $1E5$ , a batch size between 2 and 64, a  $2 \times$  increment, 10 patience steps, and 0.90 momentum. Authors adopt an approach dubbed "batching" for the multiplication of pathogens to augment their arsenal of anti-infectious techniques.

### Observations on the reliability of the CNN model

Figure 2 illustrates the four different scenarios in which CNN was used to leverage the APTOS dataset: with HIST + CLAHE + ESRGAN, with CLAHE + HIST + ESRGAN, with CLAHE + ESRGAN, and without any enhancement. Given the fact that each run's weights are produced at randomly, reliability varies greatly; hence, just the best run's findings are kept and allowed access. Below are a few real-world applications of the CNN paradigm.

**Table 8.** The highest reliability without improvements.

37. Accuracy	38. Top-2 accuracy	39. Top-3 accuracy	40. Recall	41. Precision	42. F1-score
43. 0.7523	44. 0.8689	45. 0.9472	46. 0.75	47. 0.74	48. 0.75

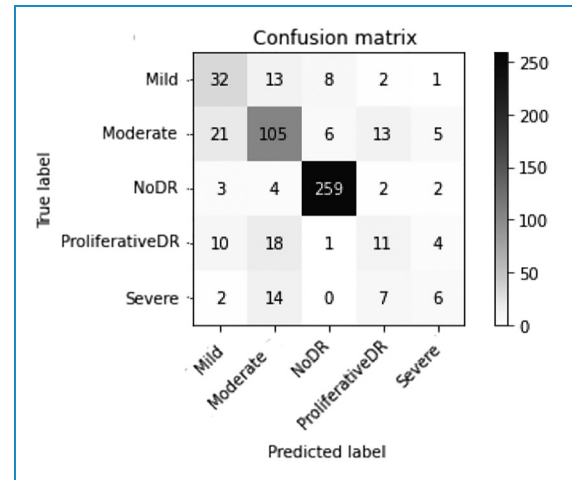
**Table 9.** Class-specific outcomes generated without improvements.

Classes	Recall	Precision	F1-score	Total number of images
No DR	0.96	0.95	0.95	270
Moderate DR	0.70	0.68	0.69	150
Mild DR	0.57	0.47	0.52	56
Severe DR	0.21	0.33	0.26	29
Proliferative DR	0.25	0.31	0.28	44
Mean	0.75	0.74	0.75	549

DR: diabetic retinopathy.

**Scenario A.** The first scenario is executed in three steps (using HIST, CLAHE, and ESRGAN), followed by augmentation to prevent overfitting. The CNN model is finally utilized to identify the images. Table 2 displays the best results from scenario a, which have an accuracy of 74.86%, a top-2 accuracy of 88.52%, a top-3 accuracy of 95.99%, a precision of 74%, a recall of 75%, and an F1-score of 74%. In Table 3, we can find the total number of image tests conducted on the distinct classes of the APTOS dataset. The statistics indicate that the no DR class has more occurrences (270) and greater precision, recall, and F1-score values (94, 97, and 95, respectively). Figure 8 depicts the outcomes of deploying the classifier model on the testing data and evaluating the actual labels with the expected labels. It also depicts the confusion matrix for the five-class single-label evaluation technique for our model.

**Scenario B.** The second scenario is further executed throughout three phases (using CLAHE, HIST, and ESRGAN), followed by augmentation to avoid overfitting. Finally, the CNN model is utilized to label images. The best results from scenario b are displayed in Table 4; they produce an accuracy of 70.67%, an accuracy in the top-2 of 82.88%, an accuracy in the top-3 of 93.81%, a precision of 72%, a recall of 71%, and an F1-score of 71%. In Table 5 is the aggregate among all image tests conducted on the distinct classifications of the APTOS dataset. Statistics indicate that the no DR class has more occurrences (270) and

**Figure 11.** Superior confusion matrix without improvement for APTOS dataset.

greater precision, recall, and F1-score values (94, 93, and 94, respectively). Figure 9 depicts the outcomes of applying a classification model to a test set and comparing the actual labels with the expected labels. It also depicts the confusion matrix for the five-class single-label evaluation technique for our model.

**Scenario C.** The third scenario is executed throughout two phases (using CLAHE and ESRGAN), followed by augmentation to avoid overfitting. Finally, the CNN model is utilized to label images. The best results from scenario c are displayed in Table 6; they produce an accuracy of 97.83%, an accuracy in the top-2 of 99.31%, an accuracy in the top-3 of 9.80%, a precision of 98%, a recall of 98%, and an F1-score of 98%. In Table 7 is the aggregate among all image tests conducted on the distinct classifications of the APTOS dataset. Statistics indicate that the no DR class has more occurrences (270) and greater precision, recall, and F1-score values (100, 100, and 100, respectively). Figure 10 depicts the outcomes of applying a classification model to a test set and comparing the actual labels with the expected labels. It also depicts the confusion matrix for the five-class single-label evaluation technique for our model.

**Scenario D.** The final scenario is run on raw photos, and further augmentation is used to avoid overfitting. Finally, the CNN model is used to identify the pictures. Table 8 shows the best outcomes for scenario d, which

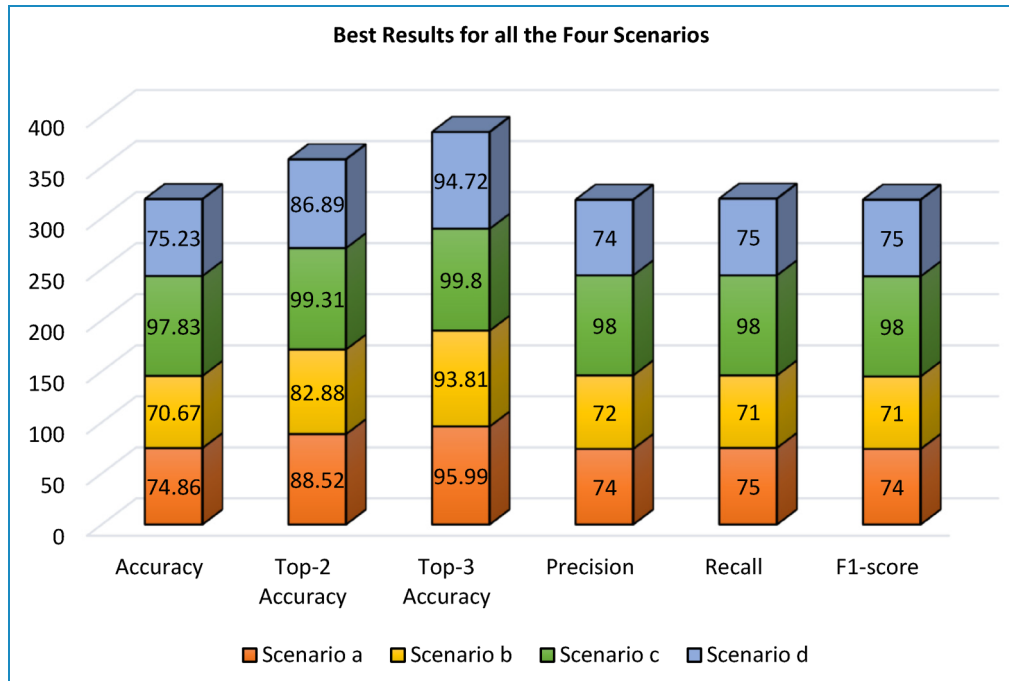


Figure 12. Finest outcomes for the four scenarios for APTOS dataset.

Table 10. The mean(avg) and SD of the classifiers' execution time expressed in milliseconds .

Batch size	HIST + CLAHE + ESRGAN Scenario A		CLAHE + HIST + ESRGAN Scenario B		CLAHE + ESRGAN Scenario C		No enhancement Scenario D	
	Avg	SD	Avg	SD	Avg	SD	Avg	SD
2	0.662579	1.542099	0.662499	1.586764	0.642678	0.564626	5.964915	3.406902
4	0.640667	0.328066	0.639407	0.046745	0.588829	3.877197	5.909678	0.531523
8	0.636497	0.219141	0.64265	0.136225	0.589506	3.668881	5.902664	0.365265
16	0.633072	0.025122	0.637845	0.131804	0.664034	0.206432	5.925101	1.892799
32	0.634397	0.131633	0.646147	0.431027	0.650897	0.608819	5.896779	0.106909
64	0.632565	0.04024	0.674874	0.402131	0.587931	3.628865	5.929319	1.781064

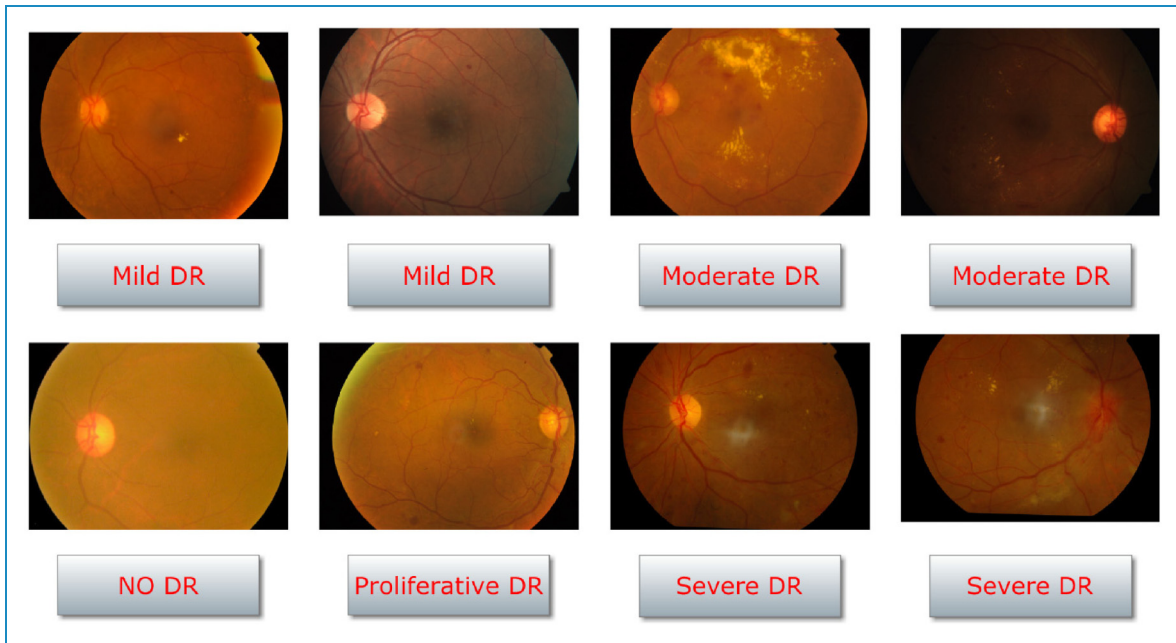
Avg: average; CLAHE: contrast limited adaptive histogram equalization; ESRGAN: Enhanced Super-resolution Generative Adversarial Network; HIST: histogram equalization; SD: standard deviation.

include an accuracy of 75.23%, a top-2 accuracy of 86.89%, a top-3 accuracy of 94.72%, a precision of 74%, a recall of 75%, and an F1-score of 75%. The total of all picture tests carried out on the various classes of the APTOS dataset is shown in Table 9. The No DR class, according to statistics, has more occurrences (270) and higher precision, recall, and F1-score values (95, 96, and 95, respectively). Applying a classification model to a test set and contrasting the actual labels with the

predicted labels shows the results in Figure 11. Additionally, it shows the confusion matrix for our model's five-class single-label assessment method.

### Comparison and contrast of the different approaches

By comparing the model's results to the baseline provided in the Kaggle dataset and further analyzing Figures 8 to 11,



**Figure 13.** Sample outcomes employing scenario C for APTOS dataset.

**Table 11.** Analyzing the model's accuracy throughout training, validation, and testing.

Scenario	Enhancement technique	Training accuracy	Validation accuracy	Testing accuracy
A	HIST + CLAHE + ESRGAN	0.7580	0.7687	0.7486
B	CLAHE + HIST + ESRGAN	0.7370	0.6995	0.7067
C	CLAHE + ESRGAN	0.9924	0.9800	0.9781
D	No enhancement	0.8506	0.7395	0.7523

CLAHE: contrast limited adaptive histogram equalization; ESRGAN: Enhanced Super-resolution Generative Adversarial Network; HIST: histogram equalization.

we find that it performed as expected. Some of the forecasts were off, but the model didn't seem to have a propensity for producing supernatural outcomes. By observing the best results provided from scenario C, we can see that the majority of correctly predicted values are for no DR, whereas there is only one image for which the model incorrectly predicted mild DR. This led to subpar results from the model in these circumstances. Further investigation revealed that there were instances where the model incorrectly predicted moderate DR when it should have predicted severe DR. It's possible that data cleansing is at play here. As a result,

professional medical advice is required for effective data cleansing.

The conclusions of the assessments reveal that scenario c, which incorporates CLAHE and ESRGAN, is more efficient compared to the other alternatives depicted in Figure 12.

The average runtime for each batch size per epoch is shown in Table 10. Three iterations are used to calculate the average and standard deviation of each batch size runtime. The amount of time needed to calculate various outcomes varies greatly. Scenario D has the biggest demand, at roughly 5 ms, compared to scenario A, B, or C, which only require a few microseconds. Due to the time savings and improved accuracy of the resulting model, this discrepancy must be taken into account when assessing the effectiveness of the picture improvement. Successful examples of the results of using the suggested CNN on improved images from scenario C are displayed in Figure 13.

The effectiveness of the recommended model in different improvement scenarios is shown in Table 11. Due to the little variance across the three sets of predictions, the results show that the model learns successfully without overfitting.

### Evaluating several alternative approaches

Table 12 illustrates that, compared to other ways, ours is the most effective and produces better results. Its effectiveness can be ascertained by comparing it to the effectiveness of equivalent procedures. For scenario c, the proposed model



**Table 12.** Evaluation of the system's efficiency against prior studies using the APTOS dataset.

Reference	Employed method	Accuracy
1	CLAHE + EfficientNet	97%
	CLAHE + VGG-16	91%
	CLAHE + Inception-V3	95%
	CLAHE + Resnet-34	84%
	EfficientNet	95%
	VGG-16	87%
	Inception-V3	90%
	Resnet-34	95%
4	Vision Transformer, Bidirectional Encoder, Class-Attention	94.63%
8	DenseNet-121	96.51%
20	MSA-Net	84.6%
39	DenseNet201	93.85%
40	Inception-ResNet-v2	72.33%
41	EfficientNet-B6	86.03%
42	Support Vector Machine (SVM)	94.5%
43	SVM, MobileNet_V2	88.80%
44	Densenet-121	85.28%
45	MobileNet_V2	93.09%
46	EfficientNet and DenseNet	96.32%
47	VGG-16	96.86%
48	CNN	95.3%
49	Hybrid Residual U-Net	94%
50	InceptionResNet-V2	97.0%,
51	VGG-16	74.58%
52	VGG16	73.26%

(continued)

**Table 12.** Continued.

Reference	Employed method	Accuracy
	DenseNet-121	96.11%
53	Local binary CNN (LBCNN)	97.41%
54	Inception-V3	88.1%
55	Resnet-50	77.22%
56	Triple-DRNet	92.08%
57	Ensemble Model	87.31%
58	EfficientNet B5	97.78%
59	Xception	89%
Proposed Methodology	CNN (HIST + CLAHE + ESRGAN) scenario a	74.86%
	CNN (CLAHE + HIST + ESRGAN) scenario b	70.67%
	CNN (CLAHE + ESRGAN) scenario c	97.83%
	CNN (No Enhancement) scenario d	75.23%

CLAHE: contrast limited adaptive histogram equalization; CNN: Convolutional Neural Network; ESRGAN: Enhanced Super-resolution Generative Adversarial Network; HIST: histogram equalization.

provides an outperformance of 97.83% over the best approaches currently available.

## Discussion

Researchers developed a new categorization approach for DR that involves the combination of CLAHE, HIST, and ESRGAN in various ways. The developed model was evaluated using the APTOS 2019 dataset, which included DR images. As a result, the APTOS dataset is used in four distinct scenarios: scenario a integrates HIST, CLAHE, and ESRGAN; scenario b integrates CLAHE and HIST; and scenario c incorporates CLAHE and ESRGAN. Scenario d, the last scenario, does not require any image improvement. The accuracy of the model across all five classes in scenario c was 97.83%. In scenarios a, b, and d, the model's accuracy was 74.86%, 70.67%, and 75.23%, respectively. For classification purposes, CNN model was installed throughout every scenario where the suggested technique was implemented. During the building of the

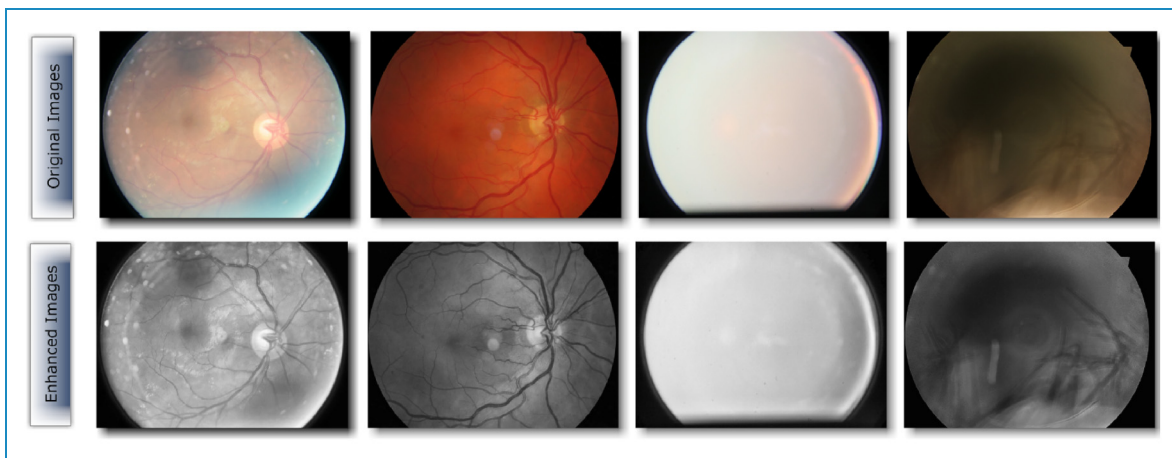


Figure 14. Original and enhanced images samples for EyePACS dataset.

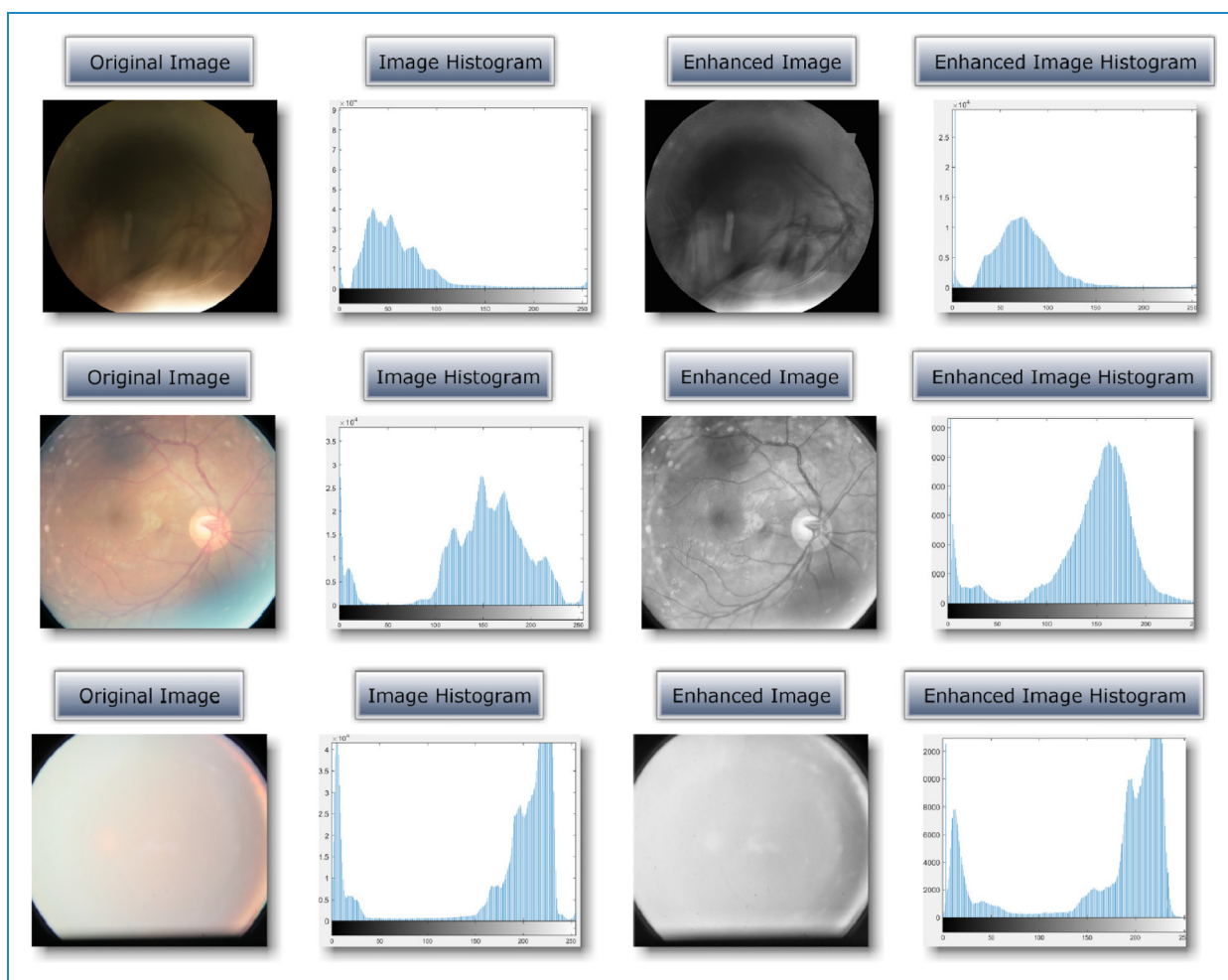


Figure 15. Original and enhanced images + histogram for EyePACS dataset.

model, we assessed the categorization performance of four distinct cases and discovered, as shown in Figure 12, that the enhancement technique for scenario c produced the

best results overall. Even though Table 12 reveals that the results of scenarios a, b, and d are less beneficial compared to those of scenario c. It also reveals that, scenarios a and d

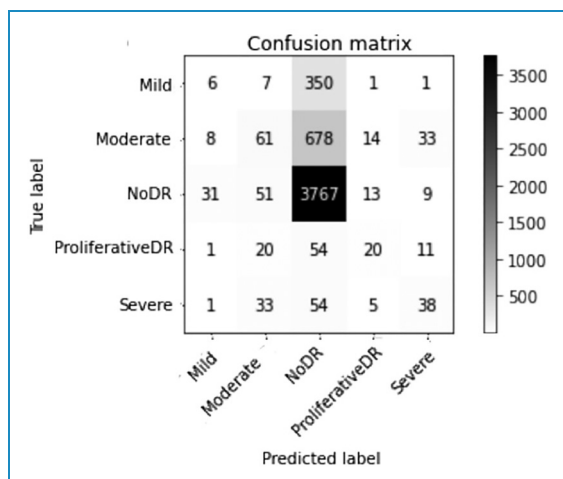


Figure 16. Superior confusion matrix for EyePACS dataset.

findings are comparable to those of previous research (utilizing VGG-16 model).<sup>40,51,52</sup>

The key drawbacks of the study include the sample size, which was rather limited, and the need that every image in the dataset have roughly the same resolution. A study's sample size must be large enough to allow for a reliable conclusion to be drawn. More samples are needed in order to improve the testing result because larger samples yield more accurate results.

By applying the suggested enhancement approach to the EyePACS dataset, poor results were yielded due to the large variation of the captured images and its poor quality, as shown in Figure 14, which shows sample of images that belong to the same class, even after using the best proposed enhancement strategy (CLAHE + ESRGAN), the quality of the images varies from image to another based on its initial image nature and resolution.

The histogram of pictures from the moderate DR class before and after using CLAHE + ESRGAN is shown in Figure 15. The entire image is sharpened using ESRGAN after first converting the image to grayscale and then using CLAHE to balance out each pixel's intensity throughout the entire histogram.

Figure 16 shows that preprocessing pictures from the EyePACS dataset with CLAHE + ESRGAN results in higher testing accuracy (73.89%).

When all of the pictures in the dataset have roughly the same resolution, we discovered strong evidence that the overall resolution enhancement offered by CLAHE + ESRGAN is the primary driver of the significant accuracy increases our approach delivers. However, when the photos have different resolutions, like in the EyePACS dataset, the suggested technique struggles to produce satisfactory results. Using CLAHE + ESRGAN as the improvement step also greatly shortens the time needed in comparison to other scenarios. The findings of the research support these observations.

## Conclusion

Leveraging images obtained from the APTOS dataset, the researchers have devised a system that is able to quickly and accurately identify five different varieties of cancer. The suggested method comprises four alternative scenarios listed below: throughout scenario a, HIST, CLAHE, and ESRGAN are employed; in scenario b, CLAHE, HIST, and ESRGAN are practiced; in scenario c, CLAHE and ESRGAN are leveraged; and throughout scenario d, no improvement is performed. CNN is taught using preprocessed images and many augmentation techniques. This is achieved by limiting the degree of overfitting and improving the overall effectiveness of the proposed methodology. Using CNN, the basic model achieves predicting efficiency equivalent to that of qualified ophthalmologists, with an accuracy of 74.86%, 70.67%, 97.83%, and 75.23% for scenario a, b, c and d, respectively. The application of CLAHE and ESRGAN in the preprocessing phase benefits not simply to the study's originality but also to its relevance. The study findings give verifiable data that the proposed technique is superior to recent studies. Assessments must be performed on a big, complex, and heterogeneous dataset, preferably containing a significant number of suspected DR instances. Just then can the recommended strategy's effectiveness be assessed? Future research on new datasets may employ augmentation-based techniques similar to those used with Resnet, AlexNet, EfficientNet, and Densenet-201. In addition, cutting-edge picture enhancement techniques could be utilized to further enhance the image's quality.

**Contributorship:** WG and MH were involved in conceptualization; WG in formal analysis, investigation, and writing—original draft; GA in funding acquisition; WG and GA in methodology; MH and NZJ supervision; and GA, MH, and NZJ in writing—review & editing.

**Declaration of conflicting interests:** The authors declared no potential conflicts of interest with respect to the research, authorship, and/or publication of this article.

**Funding:** The authors disclosed receipt of the following financial support for the research, authorship, and/or publication of this article: This research work was funded by the Deputyship for Research & Innovation, Ministry of Education in Saudi Arabia (grant number project number 223202).

**Guarantor:** NZJ.

**ORCID iDs:** Mamoona Humayun  <https://orcid.org/0000-0001-6339-2257>

NZ Jhanjhi  <https://orcid.org/0000-0001-8116-4733>

## References

- Hayati M, et al. *Impact of CLAHE-based image enhancement for diabetic retinopathy classification through deep learning*. Diyarbakir: Procedia Computer Science, 2023, 216: pp. 57–66.

2. Singh A, et al. Mechanistic insight into oxidative stress-triggered signaling pathways and type 2 diabetes. *Molecules* 2022; 27: 950.
3. Ting DSW, et al. Development and validation of a deep learning system for diabetic retinopathy and related eye diseases using retinal images from multiethnic populations with diabetes. *JAMA* 2017; 318: 2211–2223.
4. Adak C, et al. *Detecting severity of diabetic retinopathy from fundus images using ensemble transformers*. arXiv preprint arXiv:2301.00973, 2023.
5. Tymchenko B, Marchenko P and Spodarets D. *Deep learning approach to diabetic retinopathy detection*. arXiv preprint arXiv:2003.02261, 2020.
6. Stolte S and Fang R. A survey on medical image analysis in diabetic retinopathy. *Med Image Anal* 2020; 64: 101742.
7. Alwakid G, Gouda W and Humayun M. *Deep Learning-based prediction of diabetic retinopathy using CLAHE and ESRGAN for enhancement*. 2023.
8. Chaturvedi SS, et al. *Automated diabetic retinopathy grading using deep convolutional neural network*. arXiv preprint arXiv:2004.06334, 2020.
9. Kaur P, Chatterjee S and Singh D. Neural network technique for diabetic retinopathy detection. *Int J Eng Adv Technol (IJEAT)* 2019; 8: 440–445.
10. Atwany MZ, Sahyoun AH and Yaqub M. *Deep learning techniques for diabetic retinopathy classification: a survey*. IEEE Access, 2022.
11. Shukla UV, Gupta A and Tripathy K. Exudative retinal detachment. In: *StatPearls [Internet]*. Treasure Island, FL: StatPearls Publishing, 2023, pp. 723–769.
12. Kulkarni S, et al. Estimating the magnitude of diabetes mellitus and diabetic retinopathy in an older age urban population in Pune, western India. *BMJ Open Ophthalmol* 2019; 4: e000201.
13. Taylor R and Batey D. *Handbook of retinal screening in diabetes: diagnosis and management*. New Jersey: John Wiley & Sons, 2012.
14. Kharroubi AT and Darwish HM. Diabetes mellitus: the epidemic of the century. *World J Diabetes* 2015; 6: 850.
15. Dubow M, et al. Classification of human retinal microaneurysms using adaptive optics scanning light ophthalmoscope fluorescein angiography. *Invest Ophthalmol Visual Sci* 2014; 55: 1299–1309.
16. *APTOS 2019 Blindness Detection*. 2019, Kaggle: Kaggle.
17. Pizer SM, et al. Adaptive histogram equalization and its variations. *Comput Vis Graph Image Process* 1987; 39: 355–368.
18. Garg P and Jain T. A comparative study on histogram equalization and cumulative histogram equalization. *Int J New Technol Res* 2017; 3: 263242.
19. Ledig C, et al. Photo-realistic single image super-resolution using a generative adversarial network. *Proc IEEE Conf Comput Vision Pattern Recognit* 2017: 4681–4690.
20. Al-Antary MT and Arafa Y. Multi-scale attention network for diabetic retinopathy classification. *IEEE Access* 2021; 9: 54190–54200.
21. Gargeya R and Leng T. Automated identification of diabetic retinopathy using deep learning. *Ophthalmology* 2017; 124: 962–969.
22. Qummar S, et al. A deep learning ensemble approach for diabetic retinopathy detection. *IEEE Access* 2019; 7: 150530–150539.
23. Sugeno A, et al. Simple methods for the lesion detection and severity grading of diabetic retinopathy by image processing and transfer learning. *Comput Biol Med* 2021; 137: 104795.
24. Vives-Boix V and Ruiz-Fernández D. Diabetic retinopathy detection through convolutional neural networks with synaptic meta-plasticity. *Comput Methods Programs Biomed* 2021; 206: 106094.
25. Toledo-Cortés S, et al. Hybrid deep learning Gaussian process for diabetic retinopathy diagnosis and uncertainty quantification. In: *International workshop on ophthalmic medical image analysis*. Lima: Springer, 2020, pp. 206–215.
26. Wang Y, et al. Deep learning-based detection and stage grading for optimising diagnosis of diabetic retinopathy. *Diabetes Metab Res Rev* 2021; 37: e3445.
27. Liu H, et al. Hybrid model structure for diabetic retinopathy classification. *J Healthc Eng* 2020; 2020: 1–9. doi:10.1155/2020/8840174
28. Sheikh S and Qidwai U. Smartphone-based diabetic retinopathy severity classification using convolution neural networks. In: *Proceedings of SAI Intelligent Systems Conference*. Springer, 2020, pp. 469–481.
29. Zhang C, Lei T and Chen P. Diabetic retinopathy grading by a source-free transfer learning approach. *Biomed Signal Process Control* 2022; 73: 103423.
30. Xu K, Feng D and Mi H. Deep convolutional neural network-based early automated detection of diabetic retinopathy using fundus image. *Molecules* 2017; 22: 2054.
31. Khalifa NEM, et al. Deep transfer learning models for medical diabetic retinopathy detection. *Acta Inform Med* 2019; 27: 327.
32. Afrin R and Shill PC. Automatic lesions detection and classification of diabetic retinopathy using fuzzy logic. In: *2019 International Conference on Robotics, Electrical and Signal Processing Techniques (ICREST)*. Bangladesh: IEEE, 2019, pp. 527–532.
33. Reza AM. Realization of the contrast limited adaptive histogram equalization (CLAHE) for real-time image enhancement. *J VLSI Signal Process Syst Signal, Image Video Technol* 2004; 38: 35–44.
34. Jolicoeur-Martineau A. *The relativistic discriminator: a key element missing from standard GAN*. arXiv preprint arXiv:1807.00734, 2018.
35. LeCun Y and Bengio Y. Convolutional networks for images, speech, and time series. *Handb Brain Theory Neural Networks* 1995; 3361: 1995.
36. LeCun Y, et al. Backpropagation applied to handwritten zip code recognition. *Neural Comput* 1989; 1: 541–551.
37. Sarvamangala D and Kulkarni RV. Convolutional neural networks in medical image understanding: a survey. *Evol Intell* 2022; 15: 1–22.
38. Gouda W, et al. Detection of skin cancer based on skin lesion images using deep learning. In: *Healthcare*. MDPI, 2022, 10: pp. 1183.
39. Kobat SG, et al. Automated diabetic retinopathy detection using horizontal and vertical patch division-based pre-trained DenseNET with digital fundus images. *Diagnostics* 2022; 12: 1975.
40. Gangwar AK and Ravi V. Diabetic retinopathy detection using transfer learning and deep learning. In: *evolution in Computational Intelligence: Frontiers in Intelligent Computing: Theory and Applications (FICTA 2020)*. Singapore: Springer, 2021, 1, pp. 679–689.

41. Maqsood Z and Gupta MK. Automatic detection of diabetic retinopathy on the edge. In: *cyber security, privacy and networking*. Singapore: Springer, 2022, pp.129–139.
  42. Saranya P, et al. Red lesion detection in color fundus images for diabetic retinopathy detection. In: *Proceedings of International Conference on Deep Learning, Computing and Intelligence*. Springer, 2022, pp. 561–569.
  43. Lahmar C and Idri A. Deep hybrid architectures for diabetic retinopathy classification. *Comput Methods Biomech Biomed Eng: Imaging Visualization* 2022; 11: 1–19.
  44. Oulhadj M, et al. Diabetic retinopathy prediction based on deep learning and deformable registration. *Multimed Tools Appl* 2022; 81: 1–19.
  45. Lahmar C and Idri A. On the value of deep learning for diagnosing diabetic retinopathy. *Health Technol (Berl)* 2022; 12: 89–105.
  46. Canayaz M. Classification of diabetic retinopathy with feature selection over deep features using nature-inspired wrapper methods. *Appl Soft Comput* 2022; 128: 109462.
  47. Escorcia-Gutierrez J, et al. Analysis of pre-trained convolutional neural network models in diabetic retinopathy detection through retinal fundus images. In: *International Conference on Computer Information Systems and Industrial Management*. Barranquilla: Springer, 2022, pp. 202–213.
  48. Thomas NM and Albert Jerome S. Grading and classification of retinal images for detecting diabetic retinopathy using convolutional neural network. In: *Advances in Electrical and Computer Technologies*. Singapore: Springer, 2022, pp.607–614.
  49. Salluri DK, Sistla V and Kolli VKK. HRUNET: hybrid Residual U-Net for automatic severity prediction of diabetic retinopathy. *Comput Methods Biomech Biomed Eng: Imaging Visualization* 2022; 11: 1–12.
  50. Crane A and Dastjerdi M. Effect of simulated cataract on the accuracy of an artificial intelligence algorithm in detecting diabetic retinopathy in color fundus photos. *Invest Ophthalmol Visual Sci* 2022; 63: 2100–F0089.
  51. Deshpande A and Pardhi J. Automated detection of diabetic retinopathy using VGG-16 architecture. *Int Res J Eng Technol* 2021; 8: 3790–3794.
  52. Yadav S, Awasthi P and Pathak S. Retina image and diabetic retinopathy: a deep learning based approach. *Int Res J Mod Eng Technol Sci* 2022; 4: 3790–3794.
  53. Macsik P, et al. Local binary CNN for diabetic retinopathy classification on fundus images. *Acta Polytechn Hung* 2022; 19: 27–45. doi:10.12700/APH.19.7.2022.7.2
  54. Yadav S and Awasthi P. Diabetic Retinopathy Detection Using Deep Learning and Inception-V3 Model. *Int Res J Mod Eng Technol Sci* 2022; 4: 1731–1735.
  55. Lin C-L and Wu K-C. Development of Revised ResNet-50 for Diabetic Retinopathy Detection. *BMC bioinformatics* 2023; 24: 1–18.
  56. Jian M, et al. Triple-DRNet: a triple-cascade convolution neural network for diabetic retinopathy grading using fundus images. *Comput Biol Med* 2023; 155: 106631.
  57. Kale Y and Sharma S. Detection of five severity levels of diabetic retinopathy using ensemble deep learning model. *Multimed Tools Appl* 2023; 82: 19005–19020.
  58. Paul L and Talukder KH. Blindness risk prediction caused by diabetic retinopathy from retinal image. In: *2023 International Conference on Electrical, Computer and Communication Engineering (ECCE)*. Bangladesh: IEEE, 2023, pp. 1–6.
  59. Ratna K, et al. Deep learning approach for detection of diabetic retinopathy. In: *2023 International Conference on Device Intelligence, Computing and Communication Technologies, (DICCT)*. Dehradun: IEEE, 2023, pp. 614–618.
-